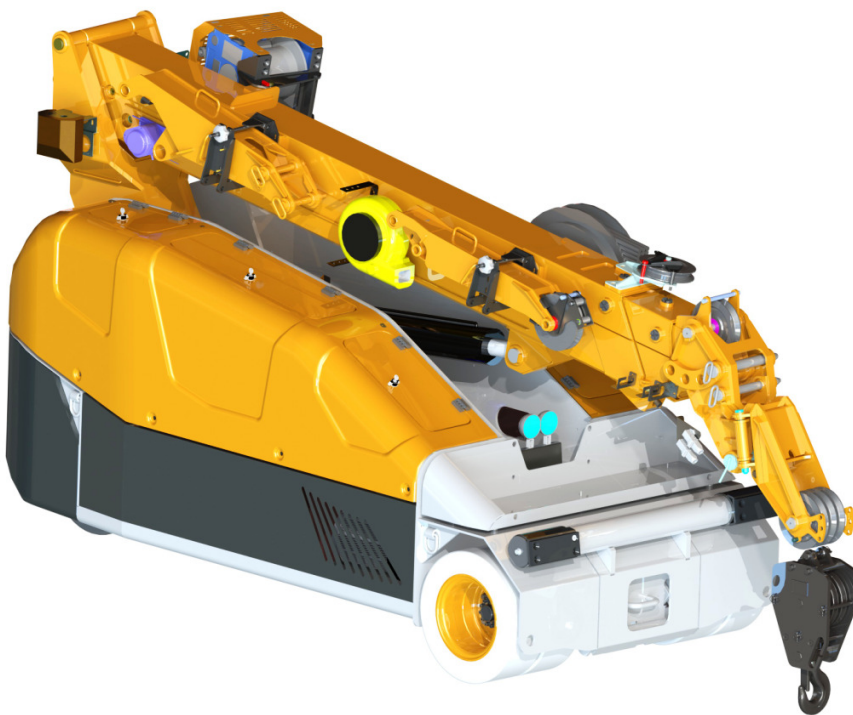




Technical Data

Specification & Capacities



MPK50



12,0kW/16,1Hp



2,8-6,9m



5000kg



EN 13000



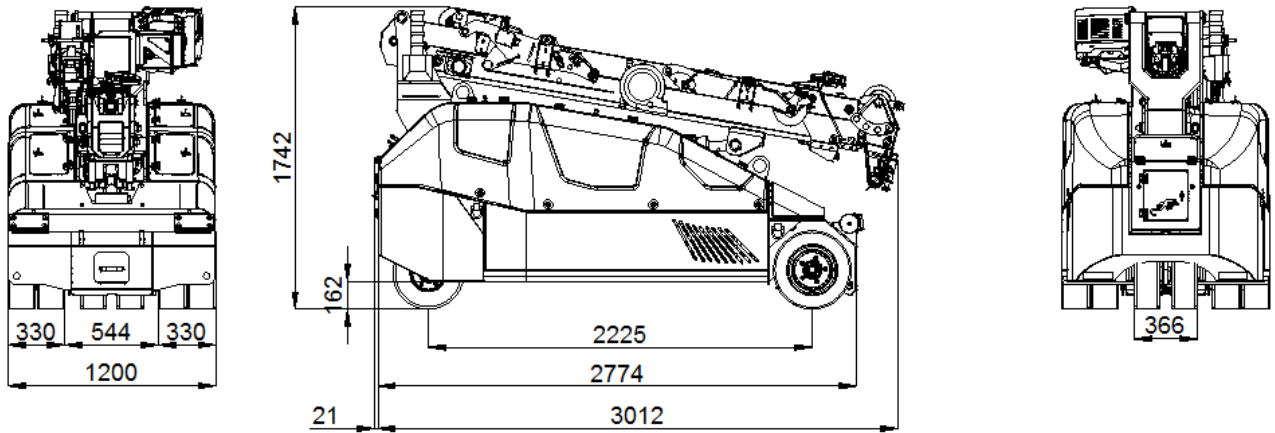
MPK50



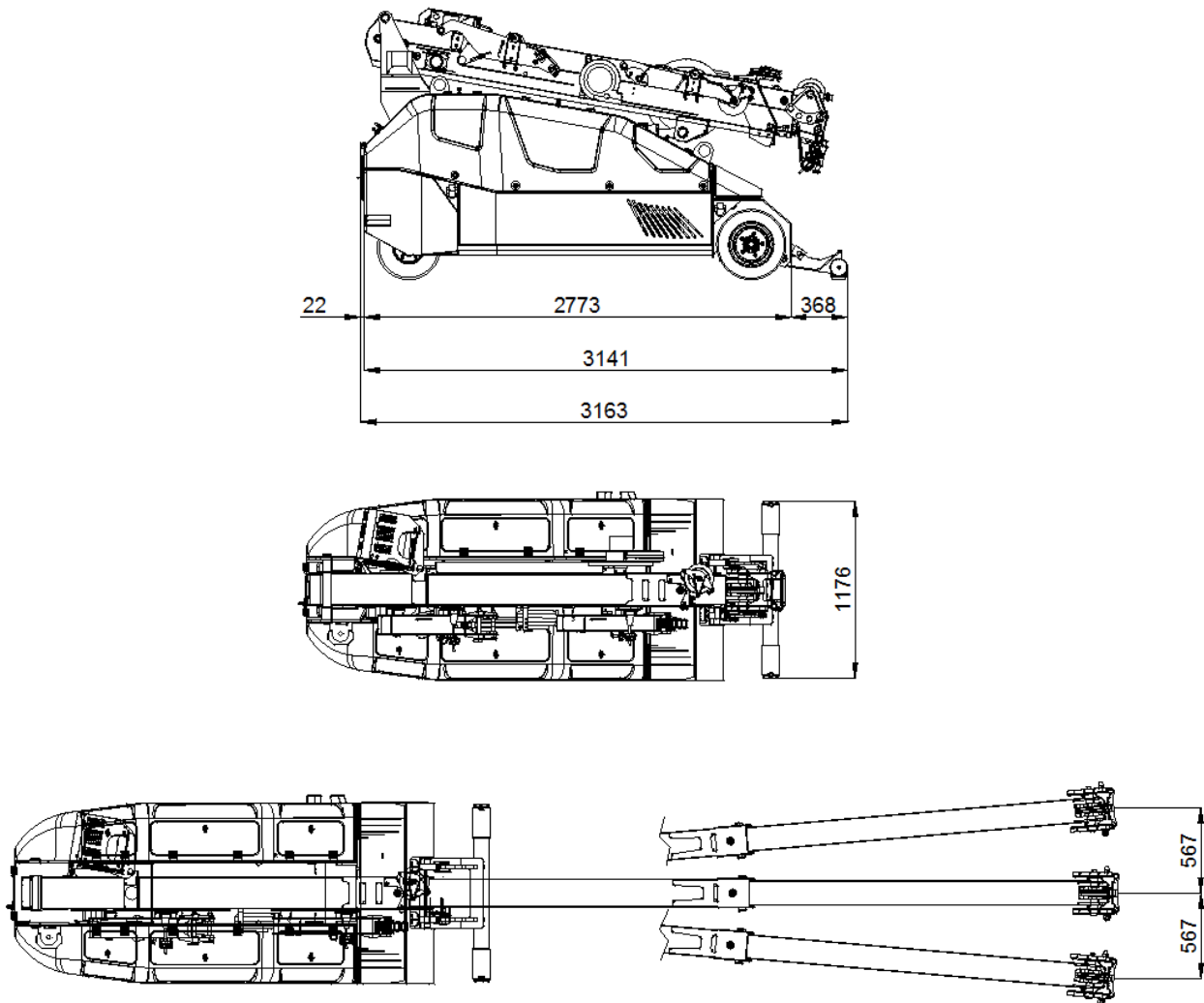
Via Campardone, 1
31014 Colle Umberto – Italy
Tel. +39 0438 1710083
Mail: info@jekko.it
Web: www.jekko.it

Date	May 10 th 2016
REV.	Rev. 2


MPK50 – OVERALL DIMENSIONS







MPK50 - Stabilizing bar



		kg
		3450
		1000
Tot.		4450

	48V 620 Ah	kW	12,0kW 16,1Hp
---	------------	-----------	---------------

	km/h	4,0
	20%	

	-10°/65°	25 sec
	m 2,8 - 6,9	25 sec

Reaction on wheel (double wheel base)

	kg	0
	kg	2600
	kg	1850
	kg	4450

HOIST PERFORMANCE

Layer	Max Line Pull	Normal Line Speed	High Line Speed
	kg	m/min	m/min
1	1.491 (*)	34,4	N/A
2	1.377 (*)	37,5	N/A
3	1.281 (*)	40,6	N/A
4	1.172 (*)	42,8	N/A
5	1.100(*)	45,1	N/A

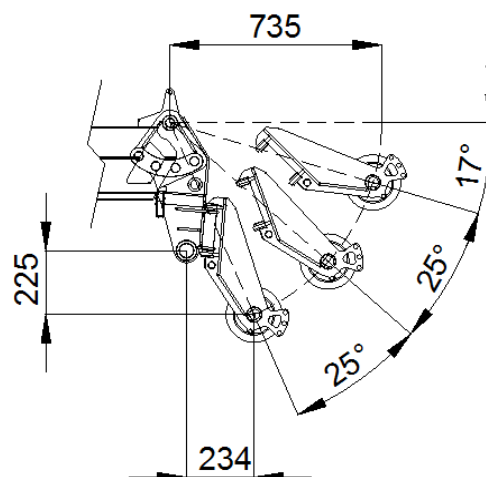
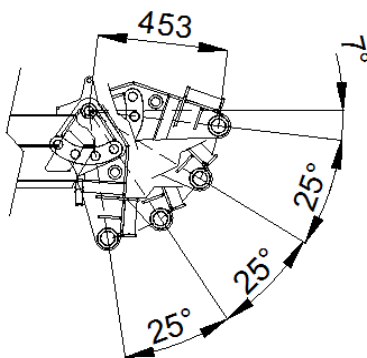
(*) 1000kg LMI limited

Wire Rope	Diameter	Tot. Length	Max Load
	mm	m	kg
19x7 right lang lay Non rotating	8	60	5.435

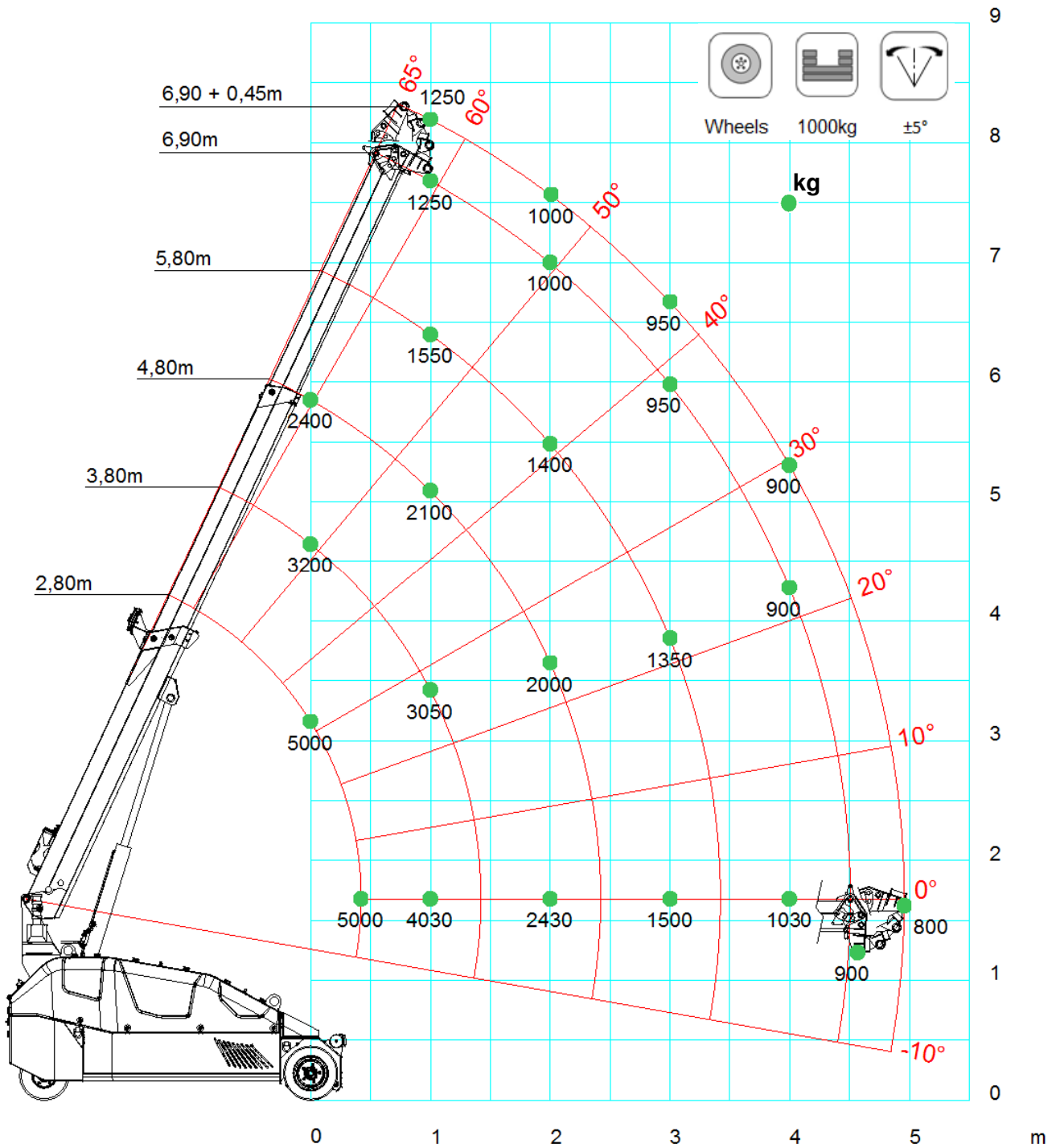
HOOK BLOCK




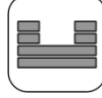


LOAD	No. of	
	Sheaves	Lines
5.000	3	5
4.000	2	4
3.000	2	3
2.000	1	2
1.000		1

BOOM HEAD CONFIGURATIONS



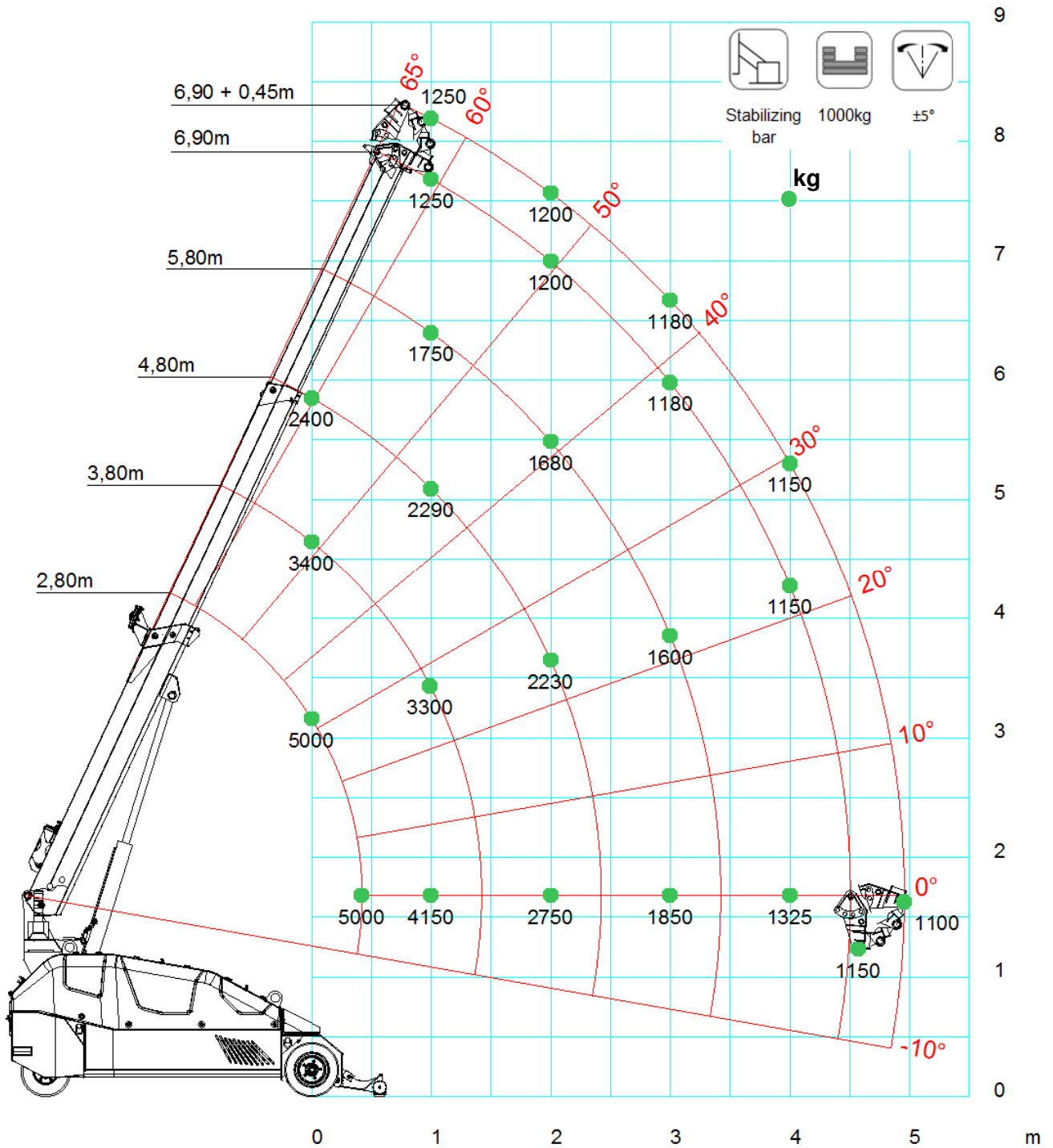
MPK50 MAIN BOOM Wheels



					
	Wheels	1000kg	$\pm 5^\circ$		
	2,8	3,8	4,8	5,8	6,9
0,0	5000	3200	2400		
0,5	5000	3100	2400	1800	
1,0		3050	2100	1550	1250
1,5		3050	2050	1450	1100
2,0			2000	1400	1000
2,5			1750	1400	950
3,0				1350	950
3,5				1200	900
4,0					900
4,5					900
4,9					800

LCMPK50_V101_0416_MAIN_A1.G_CW_1000_WHEEL

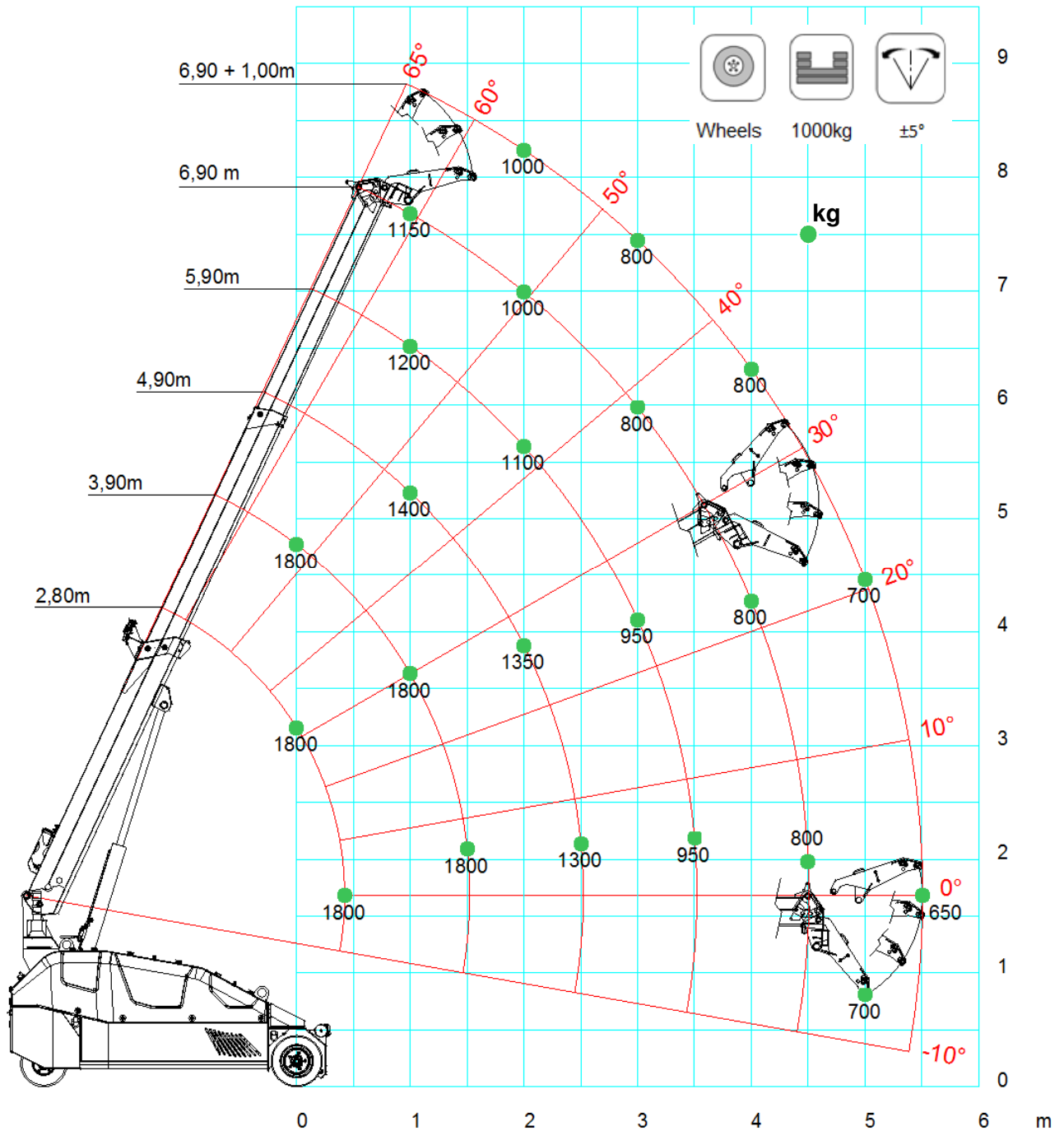
MPK50 MAIN BOOM Stabilizing bar



	Stabilizing bar 1000kg ±5°				
	2,8	3,8	4,8	5,8	6,9
0,0	5000	3400	2400		
0,5	5000	3300	2400	1800	
1,0		3300	2290	1750	1250
1,5		3300	2260	1700	1250
2,0			2230	1680	1200
2,5			2200	1650	1200
3,0				1600	1180
3,5				1500	1150
4,0					1150
4,5					1150
4,9					1100

LCMPK50_V101_0416_MAIN_A1_G_CW_1000_BAR

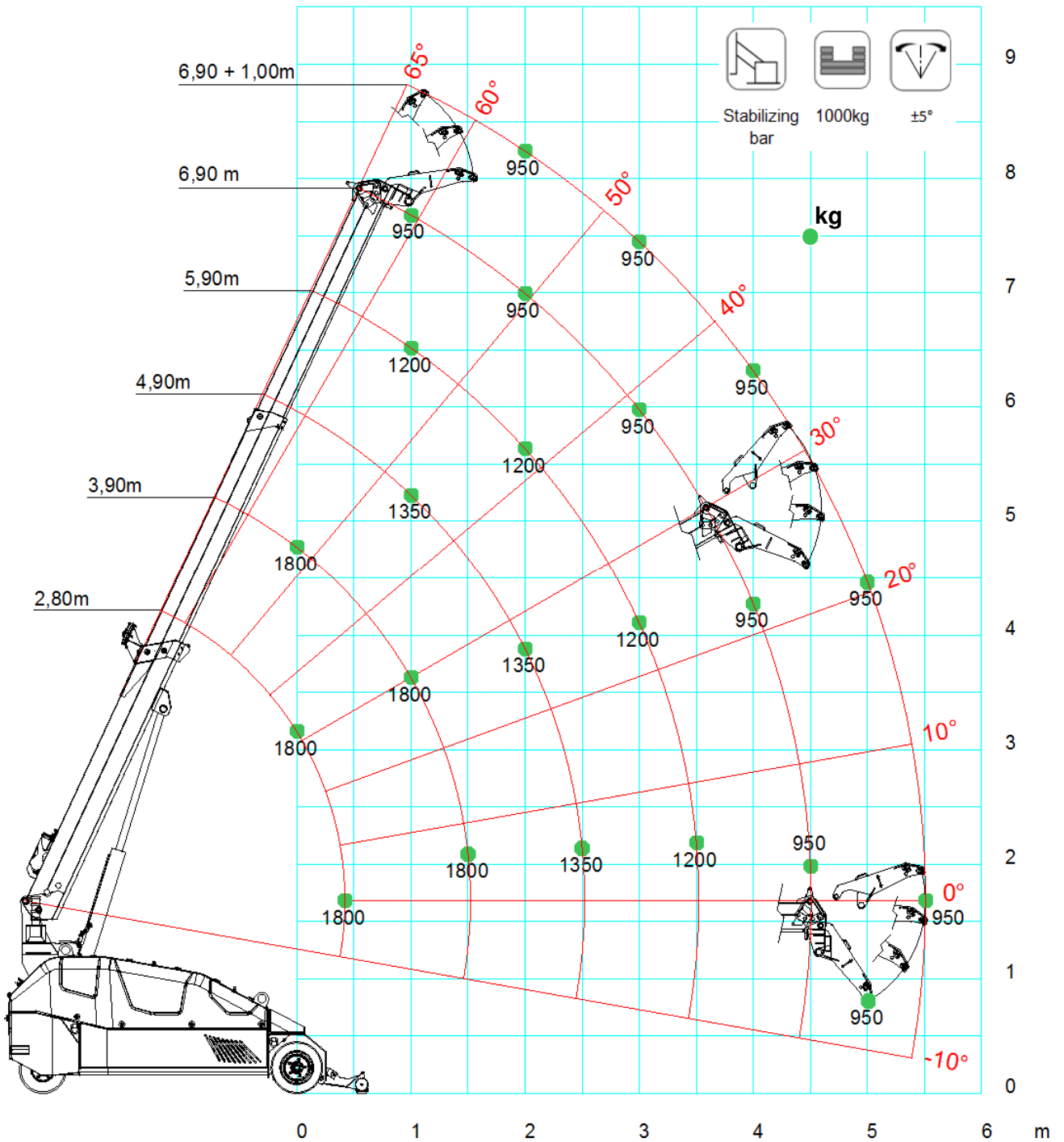
MPK50 JIB1800-700.2M Short Wheels




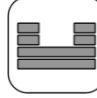




	Short	Wheels	1000kg	±5°	
	2,8	3,9	4,9	5,9	6,9
0,0	1800	1800			
0,5	1800	1800	1400	1200	
1,0	1800	1800	1400	1200	1150
1,5		1800	1400	1150	1100
2,0		1800	1350	1100	1000
2,5		1800	1300	1000	850
3,0			1250	950	800
3,5			1230	950	800
4,0				900	800
4,5				900	800
5,0					700
5,5					650

LCMPK50_V101_0416_JIB 1800_A1_G_CW_1000_WHEEL

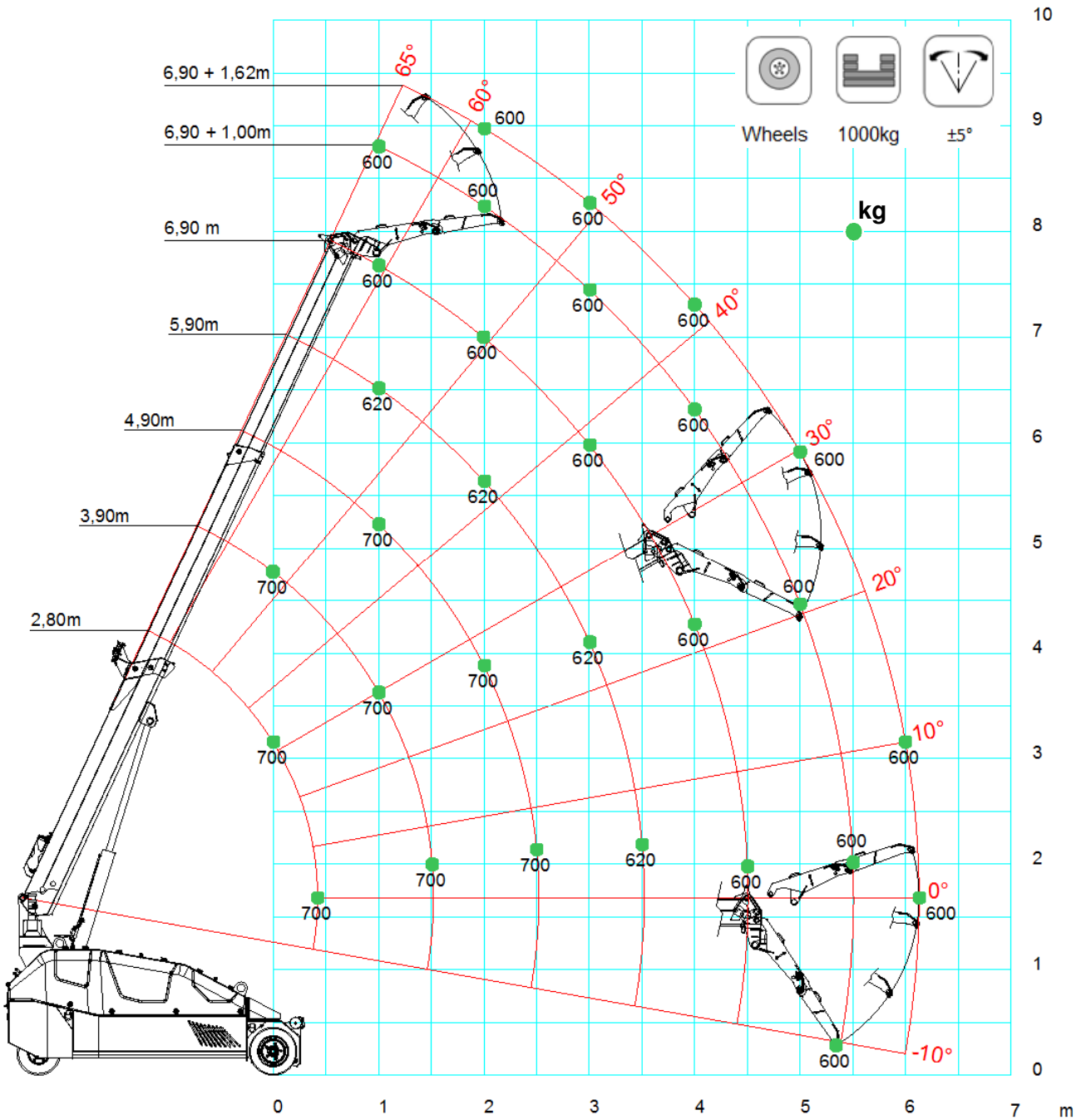
MPK50 JIB1800-700.2M Short Stabilizing bar



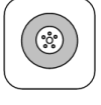
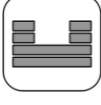
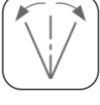



	 Short	 Stabilizing bar	 1000kg	 $\pm 5^\circ$	 EN
	2,8	3,9	4,9	5,9	6,9
0,0	1800	1800			
0,5	1800	1800	1350	1200	
1,0	1800	1800	1350	1200	950
1,5		1800	1350	1200	950
2,0		1800	1350	1200	950
2,5		1800	1350	1200	950
3,0			1350	1200	950
3,5			1350	1200	950
4,0				1200	950
4,5				1200	950
5,0					950
5,5					950

LCMPK50_V101_0416_JIB 1800_A1_G_CW_1000_BAR

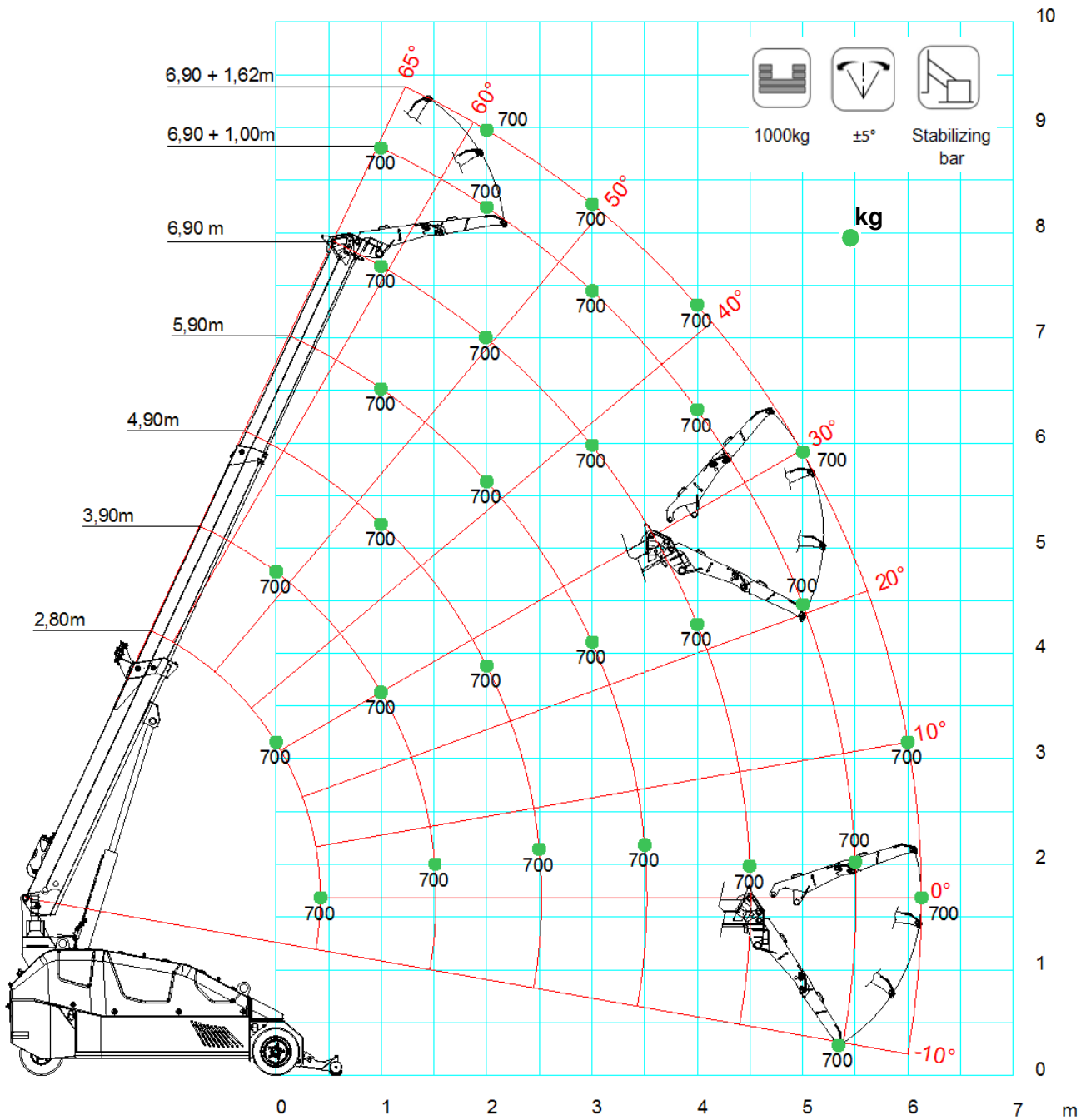
MPK50 JIB1800-700.2M Long Wheels

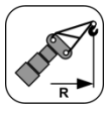


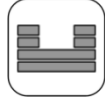




	 Long	 Wheels	 1000kg	 $\pm 5^\circ$	
	2,8	3,9	4,9	5,9	6,9
0,0	700				
0,5	700	700			
1,0	700	700	700		
1,5	700	700	700	620	600
2,0	700	700	700	620	600
2,5		700	700	620	600
3,0		700	700	620	600
3,5			700	620	600
4,0			650	620	600
4,5				620	600
5,0				620	600
5,5					600
6,1					600

LCMPK50_V101_0416_JIB700_A1_G_CW_1000_WHEEL

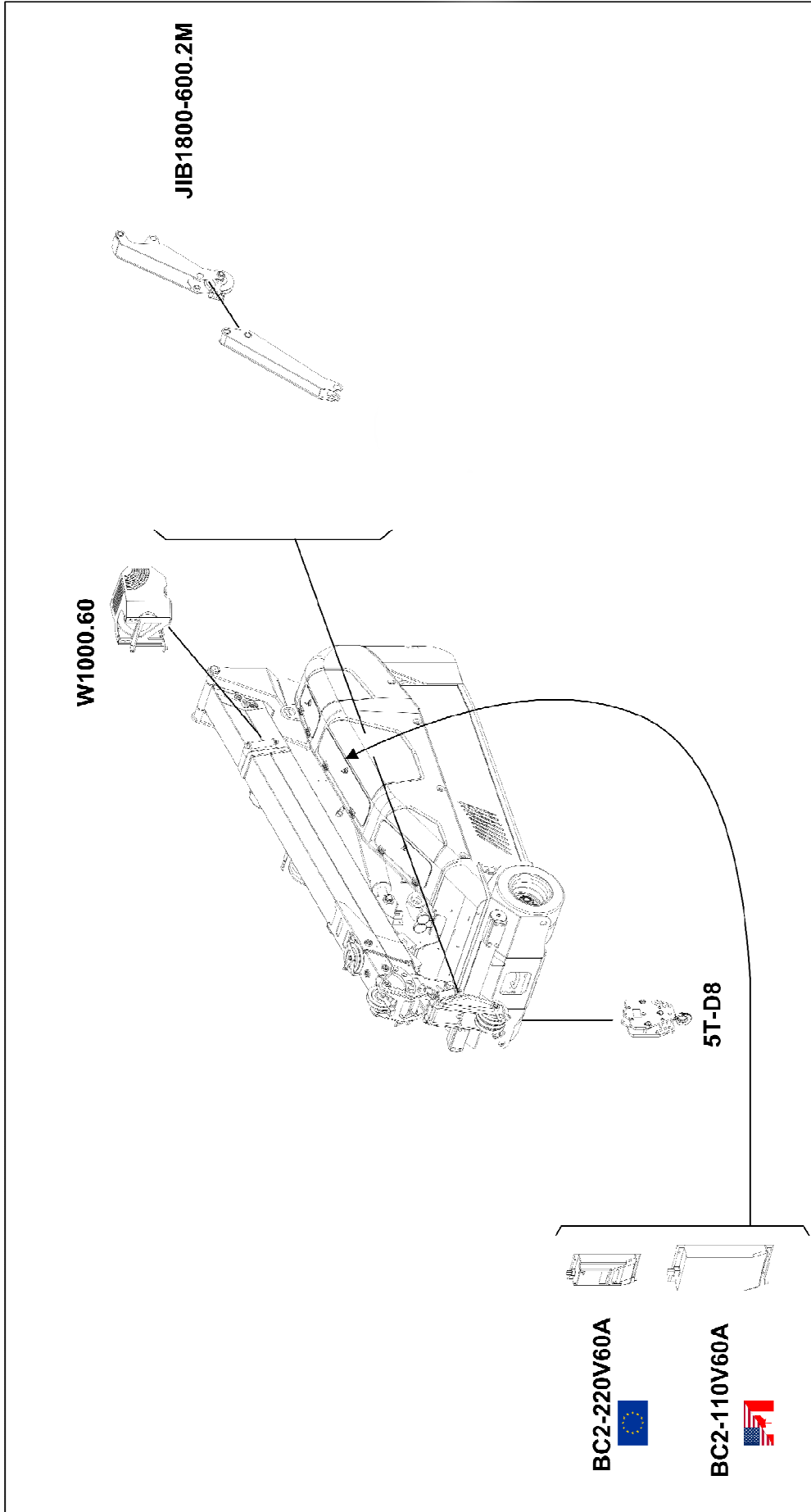
MPK50 JIB1800-700.2M Long Stabilizing bar



	 Long	 Stabilizing bar	 1000kg	 ±5°	 EN
	2,8	3,9	4,9	5,9	6,9
0,0	700				
0,5	700	700			
1,0	700	700	700		
1,5	700	700	700	700	700
2,0	700	700	700	700	700
2,5		700	700	700	700
3,0		700	700	700	700
3,5			700	700	700
4,0			700	700	700
4,5				700	700
5,0				700	700
5,5					700
6,1					700

LCMPK50_V101_0416_JIB700_A1_G_CW_1000_BAR

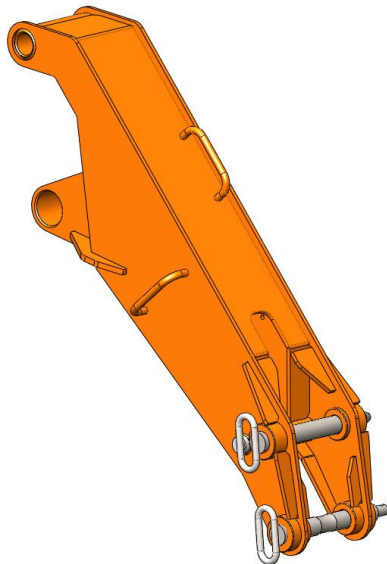
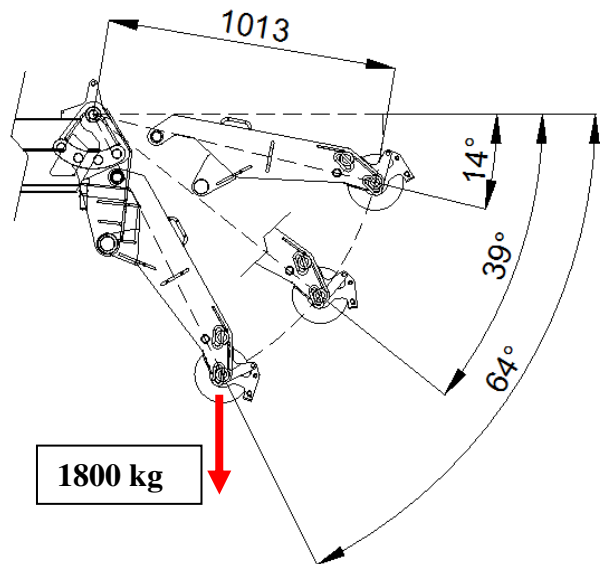
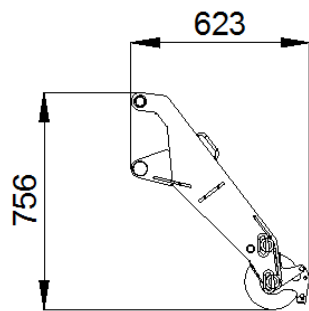
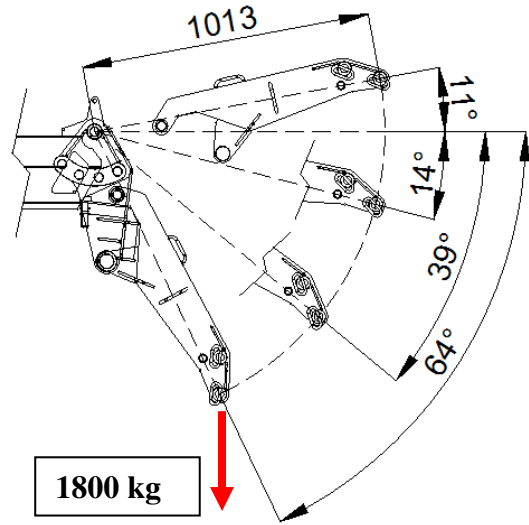
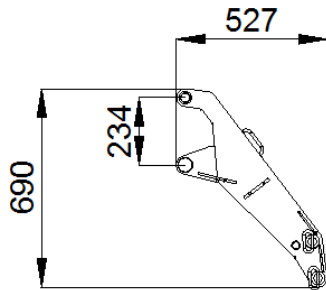
ACCESSORIES



	STD	PC-01	PC-11
Boom, Covers & Outriggers	<input type="checkbox"/> RAL2004	<input checked="" type="checkbox"/> RAL___	<input checked="" type="checkbox"/> RAL___
Chassis, Frames & Tanks	<input type="checkbox"/> RAL7001	<input type="checkbox"/> RAL7001	<input checked="" type="checkbox"/> RAL___

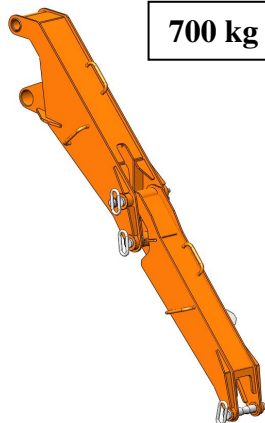
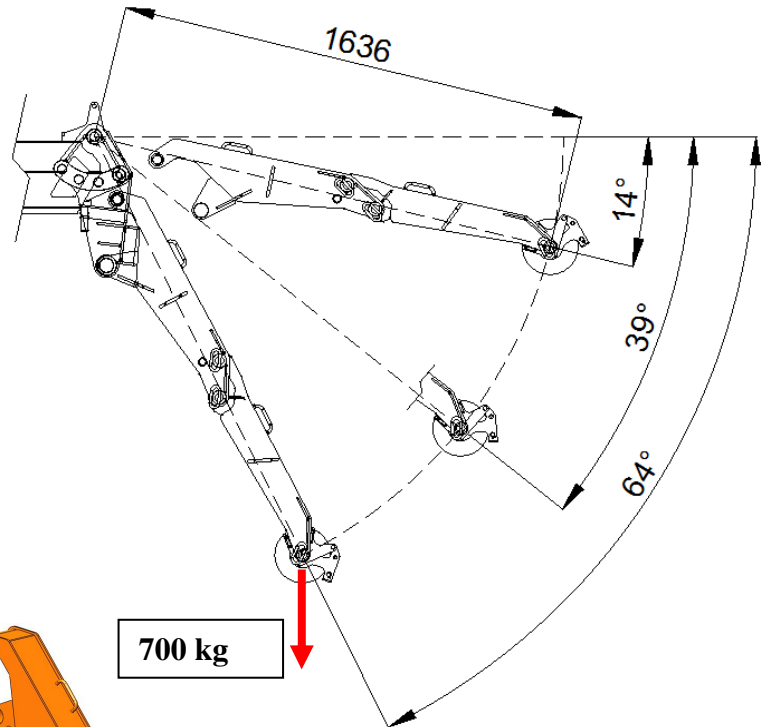
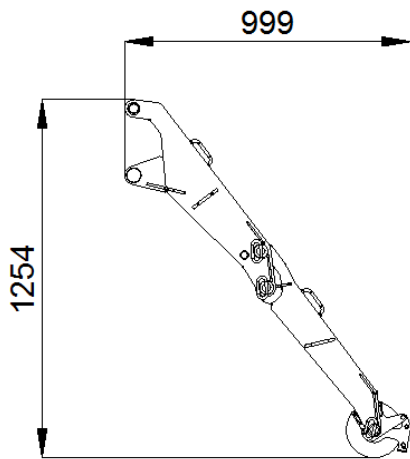
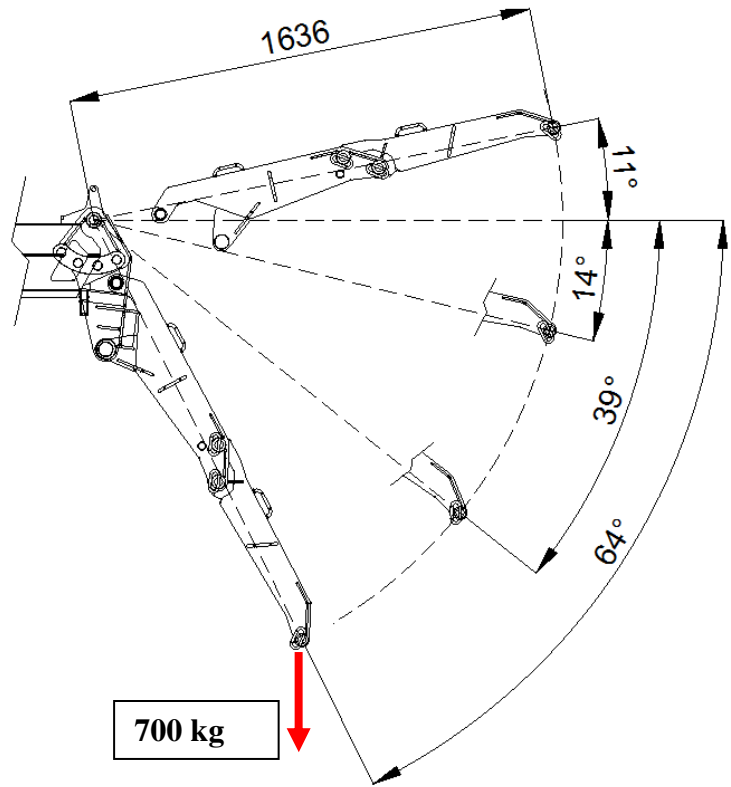
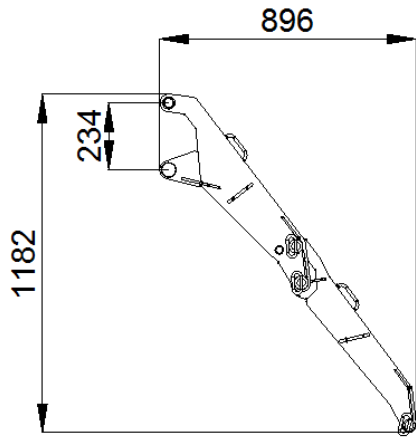
ACCESSORIES FEATURES

JIB1800-700.2M Short configuration




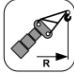



	kg
	30

JIB1800-700.2M
Long configuration



	kg
	30+20

SYMBOLS

	Weight		Chart Wheels		Engine		Jib length and angle
	Counterweight		Minipicker		Diesel Fuel		Jib Length
	Crane		Back Wheel Point Loading		Gasoline Fuel		Jib Radius
	Travel Speed		Front wheel Point Loading		Tank		Hydraulic Jib Length
	Gradeability		Travel Speed		Battery		Hydraulic Jib Radius
	Outrigger Load		Gradeability		Power		Mechanical Jib Length
	Track Loading		Working Radius		Boom Angle		Mechanical Jib Radius
	Outriggers Setup		Hookblock		Boom Length		Manipulator Length
	Ext Tracks Width		Slewing		Boom Radius		Manipulator Radius
	Chart On Tracks		Slewing Locked		Jib Hook Radius		Maximum inclination of the machinery
	Jib on board		Without jib on board		Standard		Stabilizing bar
	Horizontal boom angle		Number of vacuum pads		Factory max. load		Building site max. load

Remarks referring to load chart

- The load charts are calculated according to EN 13000.
- For the calculation of the load charts at least a wind speed of 9m/s (33km/h) and regarding the load a sail area of 1m² per ton load and a wind resistance coefficient of 1.2 on the load have been taken into account. For lifting of loads with large sail areas and/or high wind resistance coefficients the maximum wind speed as stated in the load charts has to be reduced.
- Lifting capacities are given in kilograms.
- The weight of the hook blocks and hooks is part of the load and therefore it must be deducted from the lifting capacities.
- Working radii are measured from the slewing centre.
- The lifting capacities given for the telescopic boom apply if the folding jib is removed.
- Subject to modification of lifting capacities.

Empty rectangular box for notes.

A large, empty rectangular box with a thin black border, occupying the central portion of the page, intended for taking notes.

A large, empty rectangular box with a thin black border, occupying the central portion of the page, intended for taking notes.

A large, empty rectangular box with a thin black border, occupying the central portion of the page, intended for taking notes.



DEALER



JEKKO S.r.l. via Campardone, 1 Z.I. 31014 Colle Umberto (TV)
Italy tel. +39 0438 1710083 fax +39 0438 1710123
www.jekko.it - info@jekko.it